

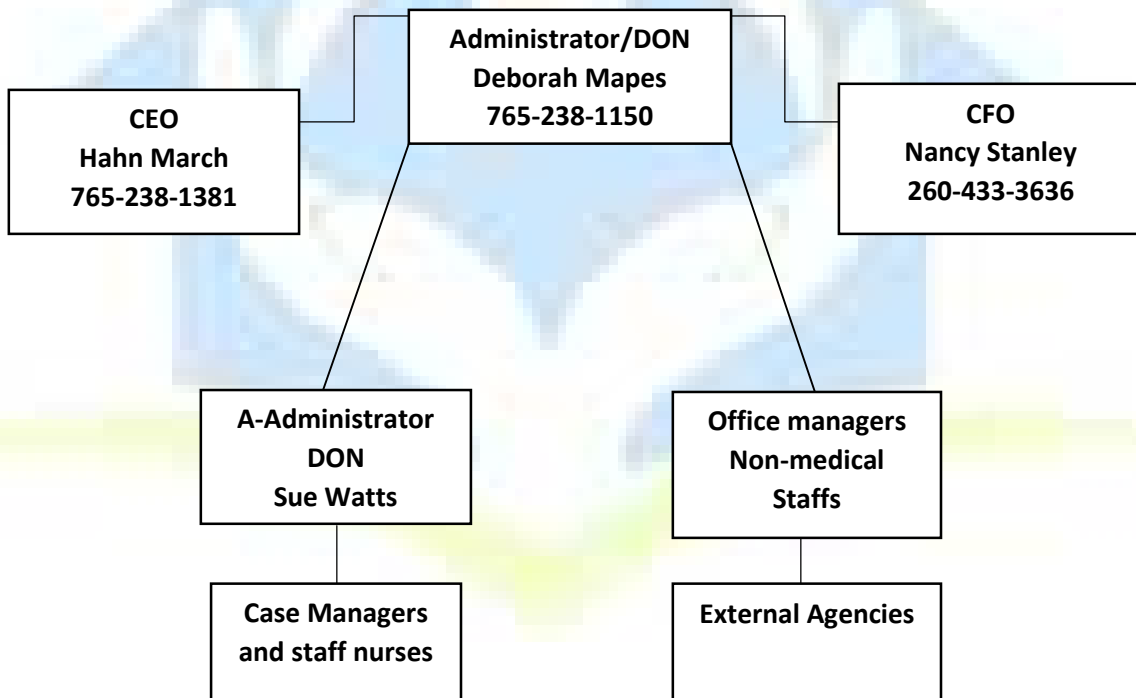


EMERGENCY PLAN

In the event of inclement weather, natural disaster, or other unforeseen emergencies, A & D has developed the following emergency plan:

If staff is unable to meet at 2013 Chester Blvd the alternate location will be at **Reid Hospital cafeteria at 1100 Reid Parkway.**

Administrator will determine if the emergency plan will be activated and a phone tree shall be utilized as follows:



Once emergency plan is deactivated by Administrator, the phone plan will be utilized to announce the emergency plan is deactivated.